



## ***Welfare Officer***

My name is Matt Irving and I am your club's Welfare officer.

Easthampstead Golf Club has implemented a safeguarding and child protection policy. This Policy applies to all juniors, whether members or not and includes vulnerable adults.

There are procedures to follow in the event of any safeguarding issue in line with the policy laid down by England Golf. It is my role to ensure that all reasonable measures and procedures are in place to deliver that policy.

As you would expect, all of our volunteers and staff who work with children have to be checked against a police database (DBS Check). Those who work more frequently with the children will also have attended a safeguarding and child protection course. I make sure their certificates are all valid and up-to-date.

I am your first point of contact whether you are a club member, staff, volunteer, parent or junior on any issue concerning safeguarding children, abuse or poor practice, potential or alleged abuse.

Although I am a member of our club, I have no other role within the club and can therefore represent you on any safeguarding issue with impartiality and in confidence.

My picture and contact details are below but are also posted on the Junior noticeboard. The policy and procedures are also there should anyone need more information.

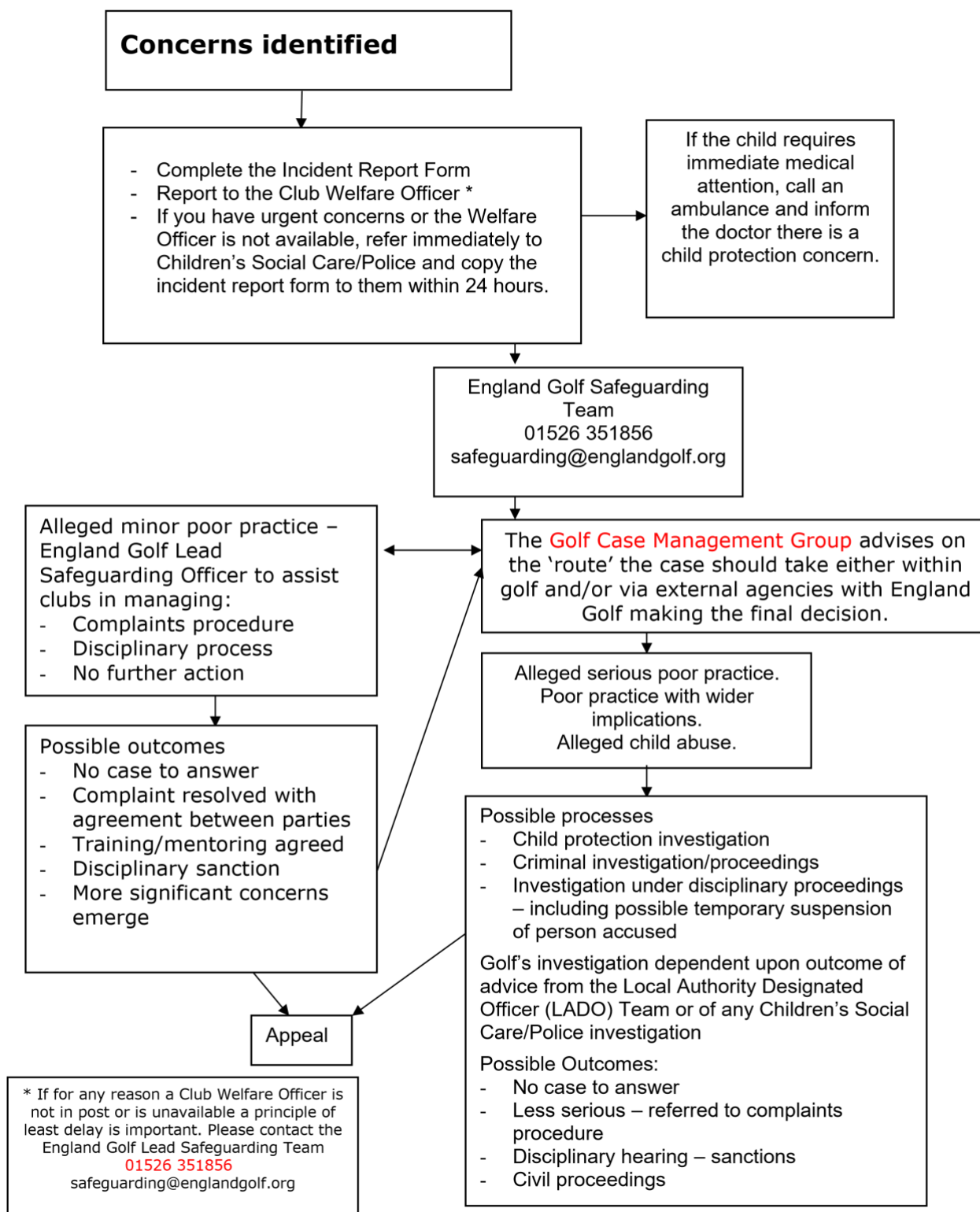


[safeguarding@easthampsteadgolfclub.co.uk](mailto:safeguarding@easthampsteadgolfclub.co.uk)

Tel: 07740081675



**What to do if you are worried about the behaviour of any member, parent/carer, volunteer, staff, Professional, coach or official in golf or affiliated organisations**





## Useful Contacts

Golf Contacts		
Name	Address	Number
<b>Club Welfare Officer – Matt Irving</b>	Club address below	Mobile: 07740081675 Email: <b><a href="mailto:safeguarding@easthampsteadgolfclub.co.uk">safeguarding@easthampsteadgolfclub.co.uk</a></b>
England Golf Compliance Office	England Golf National Golf Centre The Broadway Woodhall Spa Lincolnshire, LN10 6PU	<b>Tel: 01526 351824</b> <b><a href="mailto:compliance@englandgolf.org">compliance@englandgolf.org</a></b>
<b>Club Secretary Alistair Smith</b>	<b>Easthampstead Golf Club Downshire Golf Course, Easthampstead Park, Bracknell RG40 3DH</b>	Email: <b><a href="mailto:secretary@easthampsteadgolfclub.co.uk">secretary@easthampsteadgolfclub.co.uk</a></b>

Local Contacts		
Local Children's Social Care (including out of office hours contact) NB. In an emergency, the Samaritans will hold the Duty Officer's contact number	<b>01344 352005</b>  <b><a href="mailto:mash@bracknell-forest.gov.uk">mash@bracknell-forest.gov.uk</a></b>	<b>OUT OF HOURS</b>  01344 786543  After 5pm or at the weekends please contact The Emergency Social Work Duty Team
Samaritans		08457 90 90 90
Local Police child protection teams In an emergency contact 999	Mash contact as above	
NSPCC Freephone 24 hour Helpline		0808 800 5000



National Contacts		
The NSPCC	National Centre 42 Curtain Road London EC2A 3NH	Tel: 0808 800 5000  help@nspcc.org.uk
Childline UK	Freepost 1111 London N1 0BR	Tel: 0800 1111
NI Childline	74 Duke Street Londonderry	Tel: 028 90 327773
NSPCC Child Protection in Sport Unit	3 Gilmour Close Beaumont Leys Leicester L4 1EZ	Tel: 0116 234 7278  cpsu@nspcc.org.uk